

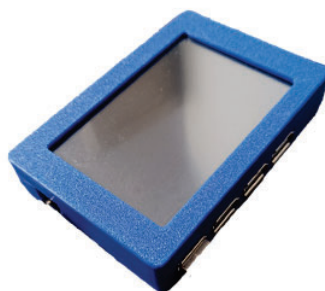


## WIRELESS INERTIAL SENSOR CHARGER.

ISEC Equipment  
Model OMC

**OMC V1**

12V / 2A



Capability to charge 4 devices simultaneously

3.5-inch graphical interface

Touch screen - inertial sensor configuration

### DEVICE PURPOSE

- The power supply for the motion inertial sensor is provided via a USB connection (the output current at 5V is up to 500mA).
- It has 4 USB Type-A ports that allow for charging 4 devices simultaneously.
- The device is intended solely for charging the motion inertial sensor – charging any other device is disabled.
- It provides feedback on the status and condition (functional/non-functional) of the battery.
- It is used for configuring the sensitivity of the motion inertial sensor, as well as the boundary values for temperature and humidity.
- It is also possible to set the frequency for sending collected data from the sensor to the server, which is then displayed in the client application.

### TECHNICAL SPECIFICATIONS

Power supply / Consumption:	12V / 2A
Screen:	Touch screen 3.5"
USB outputs:	4 x 500mA (5V)
Dimensions (LxWxH):	97 x 68 x 20 mm
Operating temperature:	-25 to 55°C