

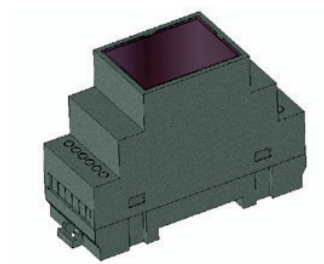


### Ethernet Modul

IMS equipment  
Model: Ethernet\_2302

## IMS ETHERNET 2302

24V / 2W



Compact housing

Easy assembly with the accompanying module via extension side connector

LCD display

#### TECHNICAL SPECIFICATIONS

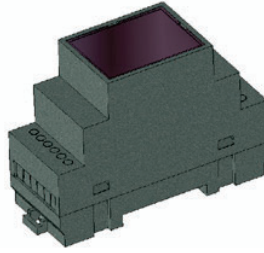
Power supply / Consumption:	24V / 2W
Dimensions with housing:	90x35x65mm
Data transfer rate:	10/100 Mbit/s
Operating temperature:	-25 to 70°C

- **Network distribution:** Provides internet connection to further connected devices, allowing them to access network resources and the internet.
- **LAN connector:** The module has one LAN connector that connects directly to the router, ensuring a stable internet connection.
- The module connects via a side connector, where it receives power, simplifying installation and reducing the number of required cables.

The compact housing allows for quick and secure mounting on a standard DIN rail, making it suitable for various industrial applications.

**MODBUS Module**IMS equipment  
Model: IMS MODBUS**IMS MODBUS**

24V / 2W



Universal communication module

Support for MODBUS RTU and  
MODBUS TCP protocolsEasy integration with adjacent  
modules via extension connector

The **IMS MODBUS** module is a specialized communication module designed to connect the IMS system with external equipment that operates using the MODBUS RTU/TCP protocol, such as industrial automation or monitoring systems.

The module acts as a bridge between the IMS environment and external systems, enabling bidirectional communication. It allows status information from IMS modules to be transmitted outward, and control signals to be received back into the IMS infrastructure.

It is powered via the IMS PDU (Power Distribution Unit) module at 24V, ensuring stable and reliable operation under all conditions.

Physically, the module is mounted on a DIN rail, enabling fast and easy installation within the cabinet alongside other IMS modules. The side connector allows for seamless mechanical and electrical integration with adjacent modules without the need for additional cabling.

**TECHNICAL SPECIFICATIONS**

Power supply / Consumption:	24V / 2W
Dimensions with housing:	90x35x65mm
Supported protocols:	TCP, RTU
Operating temperature:	-25 do 70°C

- Reliable communication and seamless integration into existing SCADA and automation systems.
- Supports MODBUS RTU and MODBUS TCP protocols.
- Connects with PLCs, UPS units, and other MODBUS-compatible devices.
- In addition to integration within our IMS system, GSL DOO also offers a standalone MODBUS solution for clients with existing industrial or infrastructural equipment. Our team provides full configuration and customization of the module according to your system's specifications, enabling simple and reliable communication with your current infrastructure.