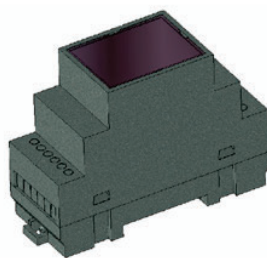


**PDU Modul**

IMS equipment  
Model: PowerDistributionUnit

**IMS PDU**

24V / 120W



Power filtering and distribution

Surge protection

Easy assembly with the accompanying module via the extension connector

**TECHNICAL SPECIFICATIONS**

Power supply / Consumption	24V / 0.5W
Maximum allowable current / power:	5A / 120W
Dimensions with housing:	90x35x65mm
Operating temperature:	-25 to 70°C

- The Power Distribution Unit (PDU) module provides an efficient and safe energy distribution solution from the power source to the connected device.
- Like the Analog module, this one is equipped with an extension connector that mounts on the side of the housing.
- All modules are designed for easy mounting on a standard DIN rail, simplifying installation, replacement, and maintenance.