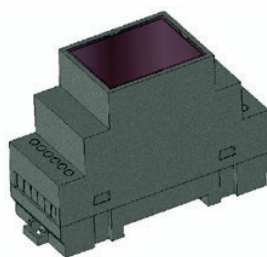


**RS485 Modul**IMS equipment  
Model:RS485**IMS RS485**

24V / 2W



Universal module for communication with RS485 module

Unit Load 1/8 (256 nodes)

Easy assembly with the accompanying module via the extension connector

**TECHNICAL SPECIFICATIONS**

Power supply / Consumption	24V / 2W
Maximum allowable current:	5A
Data transfer rate:	10Mbps
Load capacity:	1/8 UL, 256 nodes
Dimensions with housing:	90x35x65mm
Operating temperature:	-25 to 70°C

- Our universal module enables simple and reliable communication with devices using the RS-485 standard, offering flexibility for a wide range of applications.
- Like the Analog module, it is equipped with an extension connector that mounts on the side of the housing.
- All modules are designed for easy installation on a standard DIN rail, simplifying installation, replacement, and maintenance.